

---

---

# The “God” Jersey

Created by: Morgan Stout, Kylie Lewis, and Meghan Roesler

---

---

# What is the “Cool” Jersey?

A Cool Jersey is a jersey that helps you cool down while you're on the field. What we did was take a normal jersey, felt, four cooling pads, and hot glue. We included two big ones (for the front and the back) and two small ones (for the shoulders), and used the felt and hot glue to make it to where the cooling pads wouldn't fall out when you're running.

# Why choose to do this invention?

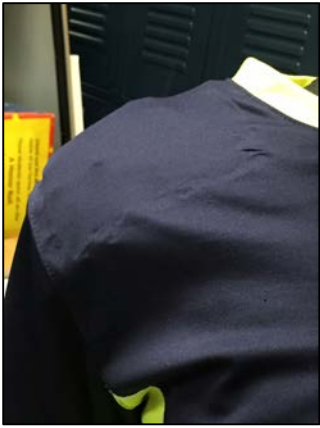
We chose this invention, because we thought that once you're hot on the field, you sweat more, and so, we decided that to prevent this we would make it to where you will not sweat as much outside and be less hot when you are working out. Also, we are one of the first people to invent something like this jersey.

# The challenges we had

When we were inventing this product, we first tried to use duct tape to keep the felt down. This did not work at all, since it just kept tearing off of the jersey. Another thing we faced would be trying to find the right cooling pack. The little cooling pads were easy to find, but we had found something online for the big one. Once one of us went to get it, of course, it wasn't there. So, we had to find another one that was just big enough, and wouldn't lose its coldness.

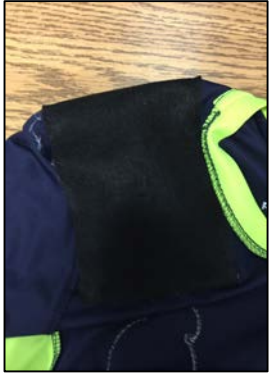
# What we would have changed/ What we did well

If we were to change something about our project, it would be getting a better ice pack for the chest and the back, because it would've been better to have something that is flat and gel like. One other thing would be to use something to keep the felt down so it doesn't slide. Something we think we did well would be using felt instead of fabric (so it could hold the cooling pads well) and deciding to use the hot glue instead of the duct tape (since it had completely failed).



### The Sleeve^

On the bottom is what it looks like inside out and on the left is what it looks like when wearing it.



left Sleeve



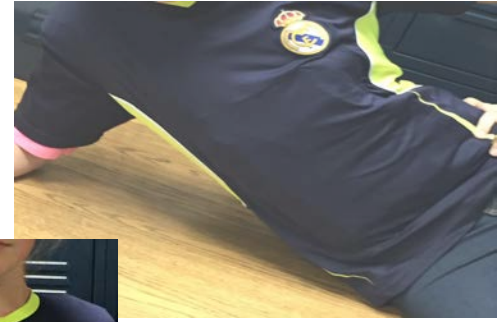
Right sleeve



The back of the inside



The front of the inside



The *fabulous* Meghan modeling the "Cool" Jersey

# PICTURES

:p